



Library Information Service

Lancashire and South Cumbria NHS FT

Library News

May 2025

Welcome to May and the glorious weather we are all enjoying. This month celebrates National Walking Month—an opportunity to ensure you are getting your daily steps in. Why not use this as an opportunity to have a 'walking' meeting, walk to work or destress after a busy day with a walking catch up with friends/family. May also celebrates Deaf awareness week (5th –11th). A week dedicated to raising awareness to promote inclusivity. This year's theme is 'Beyond Silence' - encouraging discussions of breaking down the barriers and celebrating the diverse way deaf people communicate. Community Roots frequently run 'Introduction to deaf awareness' sessions— [please take a look](#) to get involved. The Library team are sad to announce the funding cuts to Psychinfo database. Unfortunately due to changes with NHS England, we will no longer have access to this database from the 8th May. The team are looking into possible alternatives, however if you frequently use this database and would like to share how this will impact your or your team— please email the academic library to help us build our case. We were grateful to those who attended the 'My story corner' launch this week—an opportunity to hear and learn from patient stories— for more information on how to get involved in future sessions please see below. The next [Dementia action week](#) will also take place between 19-25th May—identifying the importance of early diagnosis. Finally, we would like to thank all our nurses who work throughout the trust for their hard work and dedication— we hope you get the recognition you deserve this International Nurses Day and enjoy your celebrations.

Dates for your Diary:

International Day of the Midwife—5th May

Clinical Trials Day —20th May

International Nurses Day - 12th May

World Schizophrenia Day—24th May



RESOURCE OF THE MONTH ROYAL MARSDEN MANUAL

The Gold Standard for clinical nursing procedures in evidence based nursing care.

Royal Marsden is a clinical decision making tool giving you access to the latest evidence in a quick and concise manner.

- Search for procedures
- See equipment list
- Follow step- by- step procedure
- Extra drug information where needed
- Videos available for specific procedures
- Clear illustrations



Royal Marsden
Manual

All accessible with an Open Athens account. Sign up today:
<https://openathens.nice.org.uk/>



How Do I?

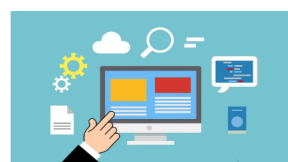
Learn from patient stories?

'My Story Corner' was launched at the end of last month— giving staff the opportunity to listen to a patient story and discuss the impact this could have within services and patient care.

Look out for a Teams invite from Comms to the next session on Wednesday 28th May for an interactive 30minute session.

• SHARING KNOWLEDGE • LUNCH AND LEARN WITH KATIE ROPER

**Monday
19th May
12-12:30**



**Utilising
E-resources to
embed evidence
based practice**

WHO?

Katie Roper is our Outreach Librarian, helping to support staff to embed evidence into their daily practice.

WHAT?

Learn about what e-resources are on offer to you, with short demo's of different resources to help you embed evidence into your daily practice. Resources include the Knowledge and Library Hub, BMJ and Royal Marsden Manual.

HOW?

All library members will receive a Teams invite to attend the session. Email: katie.rop@lscft.nhs.uk if you would like a Teams invite to be extended to you, your colleagues or your department.

For any more information, support or queries regarding any resources in this newsletter please email:

Academic.library@lscft.nhs.uk

Opening Hours:

9:00am – 4:30pm Monday to Friday

Gosall Library | Lantern Centre | Vicarage Lane | Preston | PR2 8DW